



security products

www.nevras.com.au

'protecting your premises'
from unwanted intruders with our
Video Door Phones

Sales/Support - 1300NEVRAS

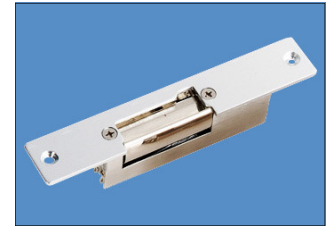
- ACCESS CONTROL SYSTEMS - BUILDING INTERCOMS - CCTV SURVEILLANCE SYSTEMS - SECURITY ALARM SYSTEMS - VIDEO DOOR PHONES -

Electric Door Strikes

Product Code : NEV-STRIKE001-NC

Specifications:

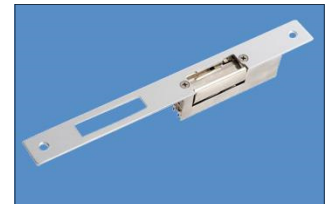
- Stainless steel plate and brass catch
- Operating voltage: 12VDC; Power consumption: 2w
- Operating current: 12VDC 0.14A for power-on locking and 12VDC 0.17A for power-cut locking
- Working temperature: -35C~50C
- Lock dimension: 146X25X30mm



Product Code : NEV-STRIKE002-NC

Specifications:

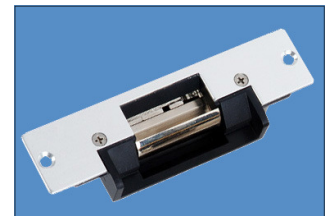
- Stainless steel plate and brass catch
- Operating voltage: 12VDC; Power consumption: 2w
- Operating current: 12VDC 0.14A for power-on locking and 12VDC 0.17A for power-cut locking
- Working temperature: -35C~50C
- Specification: 250X23X32mm



Product Code : NEV-STRIKE003-NC

Specifications:

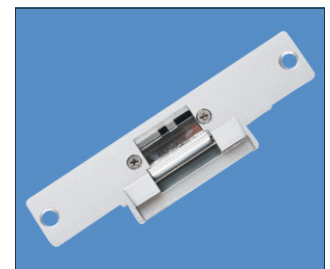
- Stainless steel plate and brass catch
- Operating voltage: 12VDC; Power consumption: 2w
- Operating current: 12VDC 0.14A for power-on locking and 12VDC 0.17A for power-cut locking
- Working temperature: -35C~50C
- Specification: 148X33X39mm



Product Code : NEV-STRIKE004-NC

Specifications:

- Zinc alloy panel and brass catch
- Operating voltage: 12VDC; Power consumption: 2w
- Operating current: 12VDC 0.24A for power-on locking and 12VDC 0.17A for power-cut locking
- Working temperature: -35C~50C
- Specification: 148X28X34mm



Product Code : NEV-STRIKE005-NC

Specifications:

- Iron panel and zinc alloy catch
- Operating voltage: 12VDC; Power consumption: 2w
- Operating current: 12VDC 0.24A for power-on locking and 12VDC 0.17A for power-cut locking
- Working temperature: -40C~50C
- Specification: 250X25X32mm

